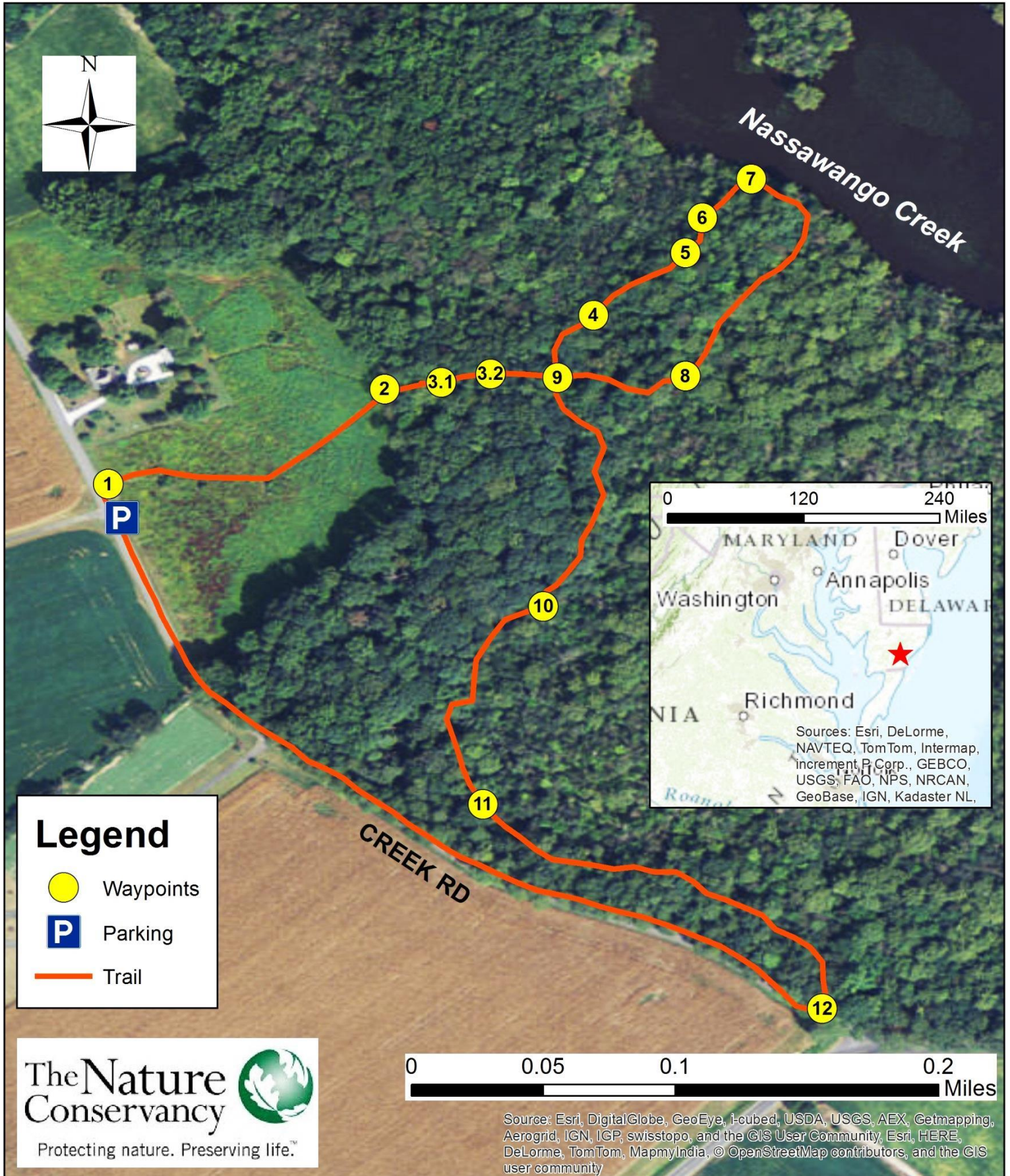


Nassawango Preserve Cubler-Payne Tract Prothonotary Birding Trail Audio Tour Map



Legend

- Waypoints
- P Parking
- Trail

The Nature Conservancy 

Protecting nature. Preserving life.™

0 0.05 0.1 0.2 Miles

Source: Esri, DigitalGlobe, GeoEye, i-cubed, USDA, USGS, AEX, Getmapping, Aerogrid, IGN, IGP, swisstopo, and the GIS User Community, Esri, HERE, DeLorme, TomTom, MapmyIndia, © OpenStreetMap contributors, and the GIS user community

Directions to Nassawango Prothonotary Birding Trail

(GPS Coordinates: 38.1706196, -75.4418156)

From Maryland/Washington D.C.

- Take US-50 E across the Bay Bridge towards Salisbury and stay on US-50 E for 80 miles. **(Last convenient restrooms are along US-50.)** Take the MD-12 S/Snow Hill Rd. exit from US-13 S. Continue on MD-12 S/Snow Hill Rd. for 14 miles. Turn right onto Nassawango Rd. for 2.3 miles and then turn right onto Creek Rd. for 0.3 miles to the parking lot.

Trail Guidelines

- Watch out for ticks, mosquitoes, chiggers, poison ivy, spider webs, and humidity.
- This audio tour trail is not a loop. Waypoints ① - ⑫ guide you through a grass field and forests. When you reach the end of the trail, you have two ways to go back to the parking lot: (1) simply retrace your steps through the forest, or (2) walk along Creek Rd. with farm fields on your left and forests on your right.
- This audio tour aims to enhance your experience while you are on the trail at the preserve. You can listen to all the audio segments, or you can select the ones that suit your interests. We encourage you to enjoy the preserve in your own way compatible with our trail guidelines to protect the preserve for future generations.
- If you observe any ATV use or vandalism in action, please immediately contact the Maryland Natural Resources Police at [800-628-9944](tel:800-628-9944). Thank you for your support!



© Laura Meyers

Prothonotary Warbler is the signature species on this birding trail.



© Will Cook

Bald Cypress has buttress roots and knees to provide stability and oxygen in the swamp.

© reddirtpics



Eastern Bluebird, among other native bird species, represents the conservation success story of using man made boxes for nesting sites on this trail.

Additional Resources

- Check out our visitor's brochures at the trailhead kiosk to learn more about past and ongoing projects at the Nassawango Creek Preserve - Prothonotary Birding Trail.
- Visit our website at nature.org/maryland.



© Will Cook

Shortleaf Pine is most abundant in xeric (dry) sites.



Geocaching

- The Nature Conservancy has placed one of a series of geocaches on this trail. In your Geocaching App, search for "Prothonotary Landing" (GC5A7QC).
- Learn about the other geocaches on The Nature Conservancy's Maryland preserves at nature.org/mdgeocaching.