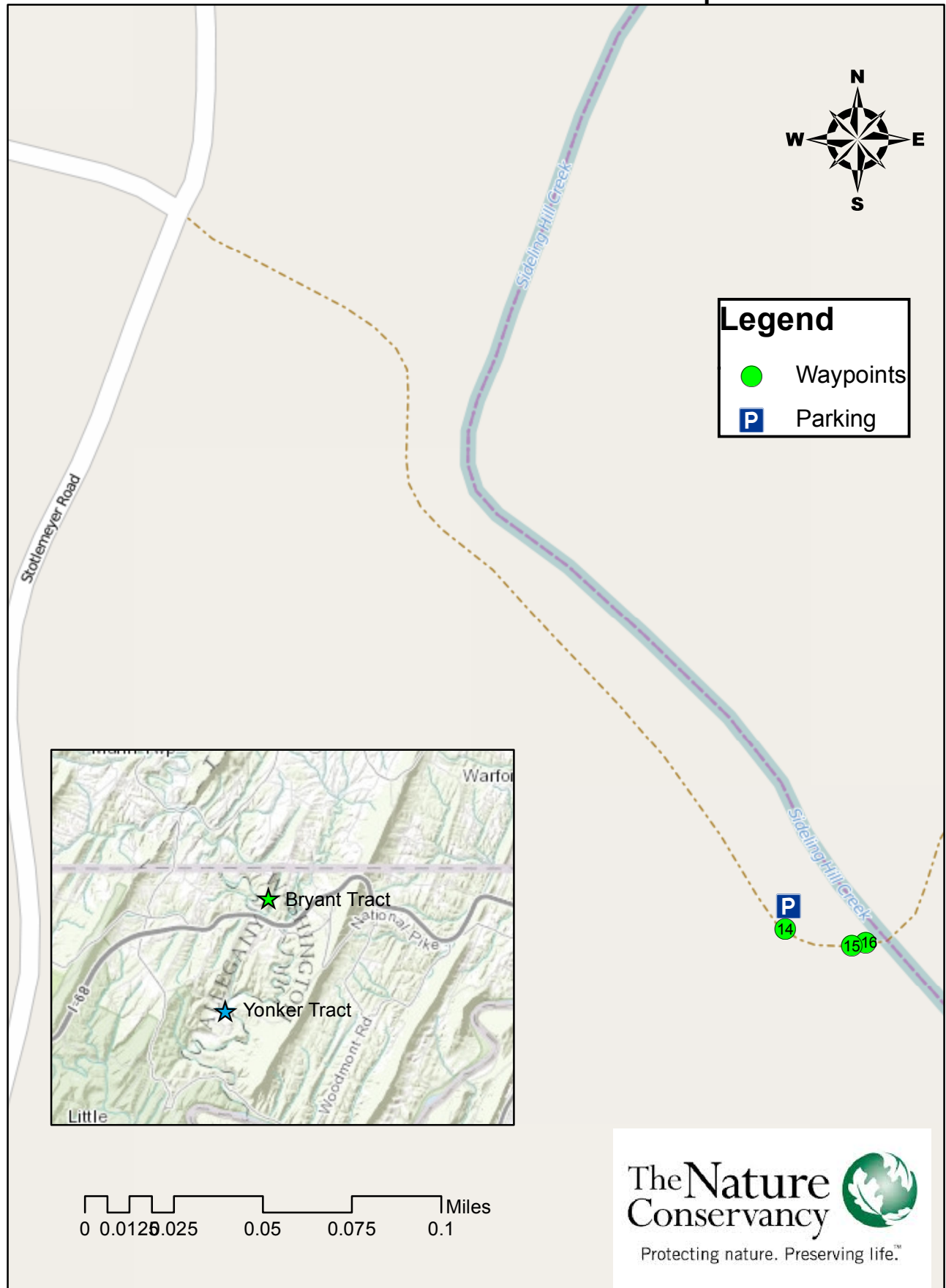


# Map B: Sideling Hill Creek The Yonker Tract Audio Map



## Directions from Map A to Map B:

Exit the fenced parking area, driving back up the dirt lane. Take a left onto high Germany and go .4 mi., crossing the bridge over I-68.

Turn left onto US-40 Scenic E (National Pike NE) and go 0.2 miles. Take the first right onto Swain Road, go 1.1 mi.

Take a left onto Swain Hollow Road NE and go 1.4 miles. Where Swain Hollow Road changes into Stotlemeyer road, take a left onto Harry Norris Road. The parking area is on the right just before the road curves into and across the creek.