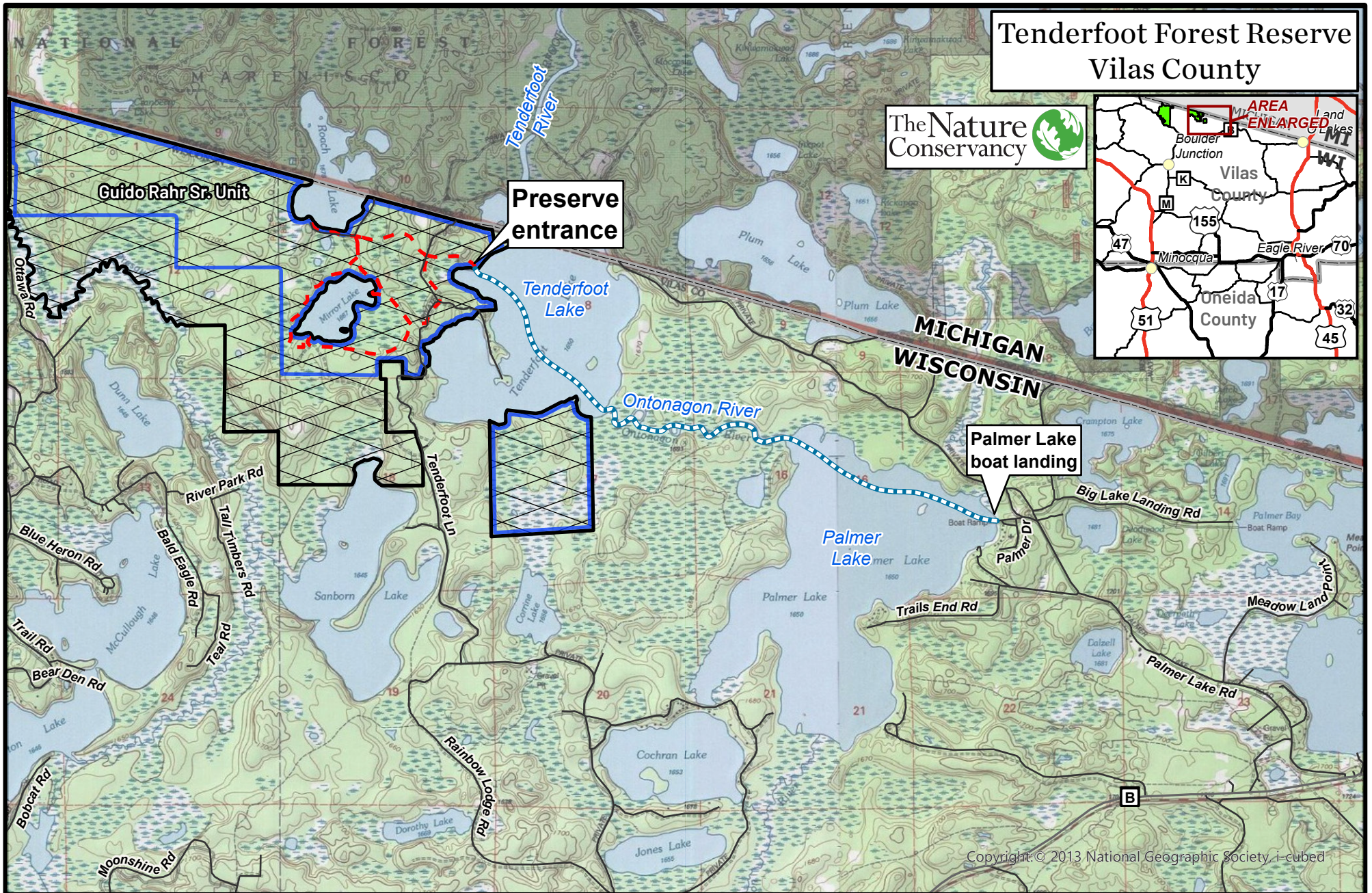
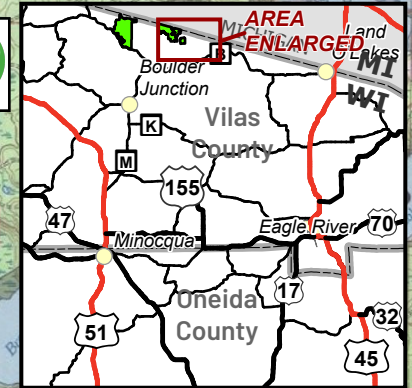
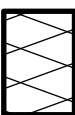





Tenderfoot Forest Reserve Vilas County



Preserve entrance

Palmer Lake boat landing

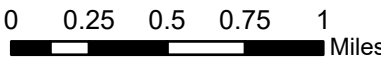
 Property of The Nature Conservancy open for trapping, deer, turkey, small game and bear hunting.

-  Water access route
-  Preserve trails
-  Guido Rahr Sr. Unit

Access by watercraft only. Approximate distance from Palmer Lake boat landing to Tenderfoot preserve dock is three miles.

Tenderfoot Forest Reserve is located in Presque Isle Township, T43N-R7E, sections 1, 2, 11, 12, 13; and Land O' Lakes Township, T43N-R8E, sections 7, 8, 17, 18; 1473 acres.

Learn more: nature.org/wisconsin



1:39,000

Copyright © 2013 National Geographic Society, i-cubed