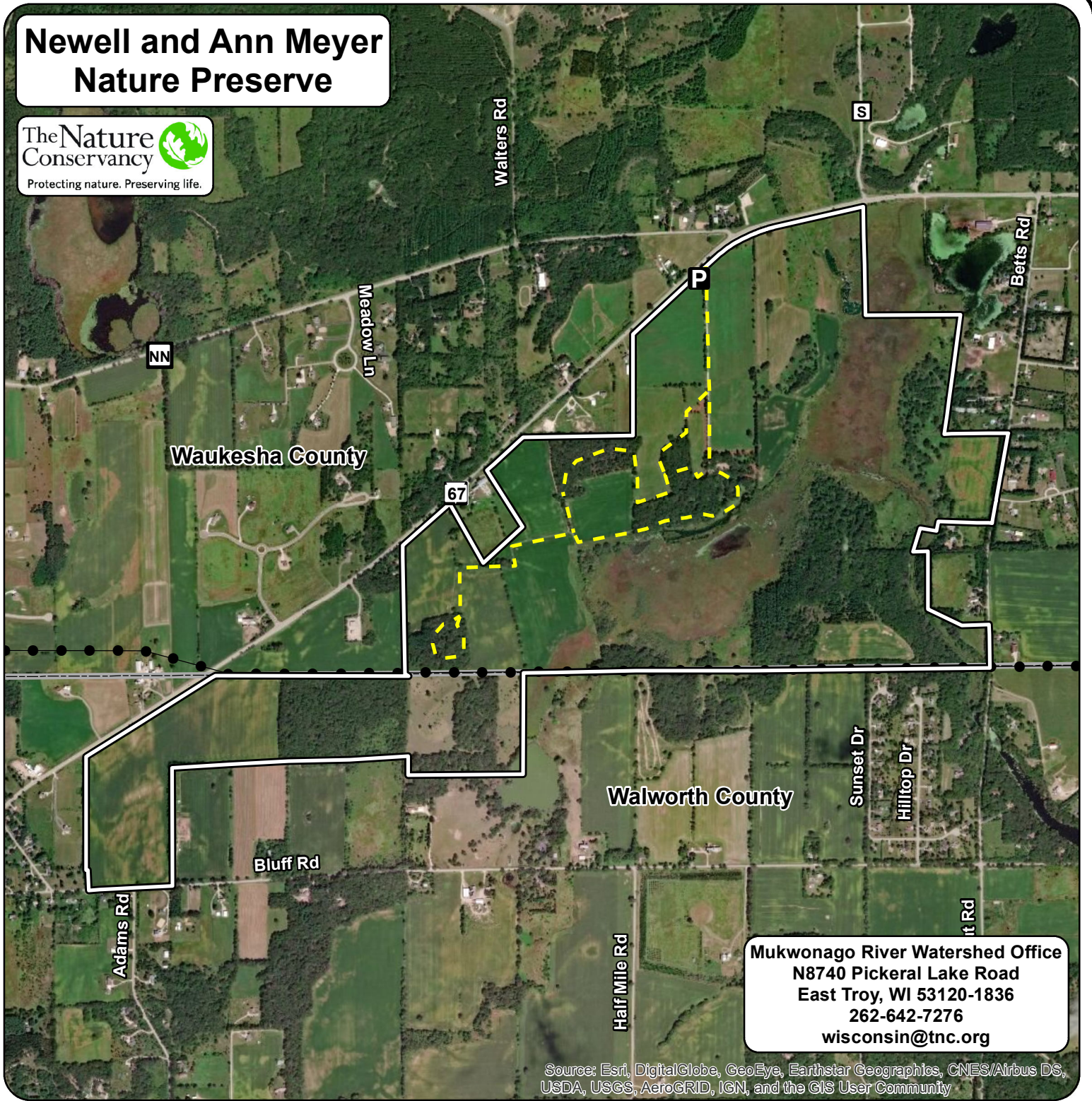







Newell and Ann Meyer Nature Preserve



Mukwonago River Watershed Office
 N8740 Pickeral Lake Road
 East Troy, WI 53120-1836
 262-642-7276
wisconsin@tnc.org

Source: Esri, DigitalGlobe, GeoEye, Earthstar Geographics, CNES/Airbus DS, USDA, USGS, AeroGRID, IGN, and the GIS User Community

-  Preserve Boundary
-  William and Linda Priebe Family Trail - 3 miles
-  Parking
-  County Boundary
-  Transmission line

Directions: The preserve is located at S104-W38319 Highway 67 in the Town of Eagle in Waukesha County. It is about 2.5 miles southwest of Eagle. The entry drive is one mile southwest of the intersection of Highway 67 and Highway LO. Visitors can park in the lot just inside the entrance driveway and walk into the preserve.

Please follow yellow and green trail route markers. Stay on trails to avoid damage to sensitive areas.

