



© TNC

Michigan's Upper Peninsula

DATES

August 4th – 9th, 2024

PRICE

Double Occupancy: \$5,885
Single Occupancy: \$6,645

Surrounded by 1,700 miles of lakeshore from Lake Superior, Michigan, and Huron, the Upper Peninsula is a land unlike any other. Snowy winters, long summer days, and fall colors bring outdoor enthusiasts of all varieties. It is said that in Michigan, you are never more than six miles from a lake, and the Upper Peninsula is home to over 4,000 over them. Diverse wetlands, stunning rock outcroppings, and austere forests provide shelter to an incredible amount of wildlife.

The Nature Conservancy has protected over 400,000 acres of land across Michigan — safeguarding thriving cities, quiet farmlands, and woodland preserves in order to protect crucial ecosystems and natural treasures. With TNC experts in tow, this journey promises to provide access and insight into the Upper Peninsula that most visitors don't experience.

Start your adventure in Marquette, Michigan, where you will receive an overview of the work TNC is doing in the Upper Peninsula. Enjoy hiking in TNC's Echo Lake Nature Preserve; the 20-acre lake is nestled in a rugged landscape filled with century old trees.

Leaving Marquette, we'll spend the day at Slate River Timberlands; a new 10,000-acre acquisition, hike through towering hemlock trees, free-flowing rivers, and an extraordinary gorge. The rest of your journey takes place on the on the Keweenaw Peninsula. Here, you'll have the opportunity to immerse yourself in the rich mining history of the area. Kayak the Bete Grise Wetlands Preserve and explore Mary Macdonald Preserve at Horseshoe Harbor to experience the diverse landscapes that TNC works to protect.

A full day's journey will take you to Isle Royale National Park; inaccessible by vehicle, board a seaplane to visit this remote and untamed wilderness. Home to gray wolves, moose, red fox, beaver, and mink, keep an eye out as you explore by foot. Closed half the year due to extreme weather, Isle Royale receives less than 20,000 visitors a year.

A trip to the Upper Peninsula is unlike any other. We look forward to introducing you to the work TNC is doing to keep this incredible landscape open, accessible, and safe to discover for years to come!



© Drew Chylek



© Doug Pearsall

VISIT PRESERVES WITH LOCAL EXPERTS

Hike TNC's Echo Lake Nature Preserve to visit a lake defined by sheer bluffs and surrounded by a forest full of eastern white pine, hemlock, and sugar maple; spend time with a local geologist at the Mary Macdonald Preserve at Horseshoe Harbor learning about some of the Earth's oldest fossils nestled into the base of the outcrop here.

STAY IN COPPER HARBOR

Known for its rugged and natural beauty, we will stay on the Keweenaw Peninsula for three nights during our journey. Previously used as a harbor for shipping mined copper during the mid-19th century, we will lodge in the town of Copper Harbor. Our group will be joined by the local NPS Superintendent one evening to learn more about the area's rich history.

EXPLORE ONE OF THE LEAST VISITED NATIONAL PARKS

Established as a National Park in 1940, Isle Royale is only accessible by boat or seaplane. While the area is protected today, mining in the area dates to the mid-1800s.

Your trip supports the local communities you're traveling in and The Nature Conservancy's efforts locally and globally. This trip has been planned specifically by The Nature Conservancy's team of scientific experts and travel liaisons to immerse you in the work the Conservancy is doing on the ground that has global consequences.

TNC TRAVEL VALUES

ACCESS:

Travel with renowned Conservancy experts and local partners for an exclusive, behind-the-scenes experience. You won't just see amazing places, you'll witness how you are helping save them.

IMPACT:

See how your commitment to our planet and your passion for conservation are making a difference. You will see the wild places and the communities you are impacting.

KNOWLEDGE:

Learn how we are applying the latest cutting-edge science to affect global change and drive conservation.

INSPIRATION:

Immerse yourself in local cultures and awe-inspiring landscapes to foster your own connection to our world.

GLOBALLY MINDED:

Elevate your understanding of our work by seeing first-hand how TNC and our partners act locally and how we turn local results in to global impact by scaling solutions that work.

TRAVELER EXPECTATIONS & CODE OF CONDUCT:

Please read [TNC's Traveler Expectations](#), our guide for ensuring that we treat each other with respect, fairness and integrity beyond reproach during travel in accordance with [TNC's Code of Conduct](#).

Following the Code is an expectation and responsibility for everyone in the larger TNC community, including our staff, partners, vendors, and supporters. To that end, when registering for a TNC trip, you are agreeing to uphold the Code.



THE CONSERVATION LANDSCAPE

KEWEENAW PENINSULA

The Keweenaw Peninsula features some of the most spectacular landscapes in Michigan and is highly valued for its recreational value and ecological importance. Wild forests, granitic balds, and volcanic shorelines make up this unique area that The Nature Conservancy and its partners are working to protect. One such area is Bete Grise Wetlands Preserve, home to quality Great Lake Marshes, 1.5 miles of beautiful sand beach along Lake Superior, and numerous plant and animal species. In the early 2000s, this area was slated for a housing development; together with the Houghton/Keweenaw Conservation District and other partners, and months of public meetings and negotiation, the property was set aside for conservation.

SLATE RIVER FOREST RESERVE

Comprising 10,550 acres of the highest-quality managed native forests in the Michigamme Highlands, Slate River Forest provides a compelling story of what a thriving future could look like for Michigan's Upper Peninsula forests. From towering hemlock trees to free-flowing rivers, the property is rich, diverse, and stunningly beautiful. TNC scientists have worked to show that this area is some of the most resilient land in Michigan—meaning that it can sustain natural diversity in the face of a changing climate. Conserving these large areas of intact, mature forest lands are an important step toward a healthy, thriving future for Upper Peninsula forests and the communities that depend upon them. TNC's vision for this amazing place is to conserve and protect the beautiful woods and waters while continuing the careful management of forest resources.

ITINERARY

DAY 1 — Sunday, August 4th | Your journey begins mid-morning in Marquette, Michigan. Now the largest city in the Upper Peninsula, Marquette began to flourish in the mid-1800s as a shipping port after iron ore was discovered in the area. Meet your Iconic guides and fellow travelers before heading to Presque Isle Park, a forested 323-acre headland which juts into Lake Superior. Explore the lakeside cliffs and wooded trails on a two-mile loop. A picnic lunch will be enjoyed along the way.

After lunch, discuss sustainable forestry while hiking through Echo Lake Nature Preserve. This 480-acre preserve is home to a 20-acre natural lake and is surrounded by a landscape of dramatic bluffs of exposed bedrock. Look for moose, river otter, and neotropical migratory birds as you hike through this protected area.

Late afternoon, check-in to the Landmark Inn and settle into your comfortable room. There will be free time to explore Downtown Marquette prior to a cocktail reception and dinner at the Marquette Regional History Center.

OVERNIGHT AT LANDMARK INN

DAY 2 — Monday, August 5th | After breakfast at the hotel, we will depart Marquette and slowly make our way to the Keweenaw Peninsula. Our first stop is the newly acquired Slate River Forest Reserve, where local TNC experts will guide us on a four-stop route around the reserve. You'll experience, first-hand, the stark contrast between a well-managed forest and a poorly managed forest, and you'll discuss the management strategies TNC is utilizing today.

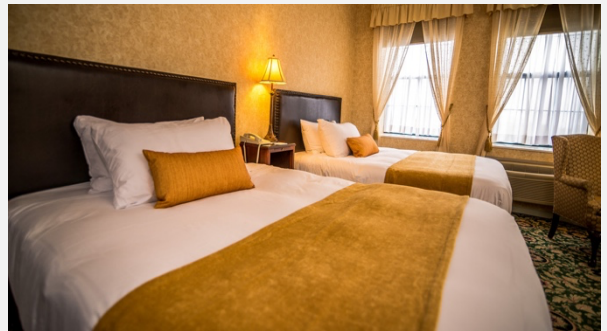
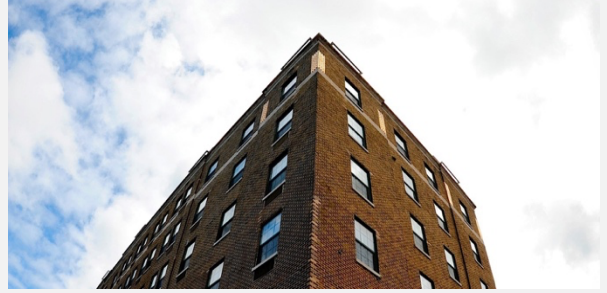
Next, we make our way up to Copper Harbor, the top of the peninsula. Michigan's northernmost community, it was first settled in 1843 after the discovery of pure copper deposits and eventually became the main shipping point for copper exporting. Check into Bella Vista Motel and enjoy the waterfront property before having dinner in town.

OVERNIGHT AT BELLA VISTA MOTEL OR SIMILAR

DAY 3 — Tuesday, August 6th | After breakfast, head to the Mary Macdonald Preserve at Horseshoe Harbor to spend time with a local geologist. Here, we'll take a short trail to the secret cove to look at ancient bedrock and delicate lichen. We will be joined by a local geologist during our time at the preserve.

In the afternoon, we will depart to explore the Keweenaw's north shore from Copper Harbor to Eagle River, starting with lunch at Eagle Harbor Inn. As we make our way along the coast, there will be time to see the lighthouse, grab some locally made jam, visit a waterfall or two, and spend time on the sand to dip your toes in the Bay.

LODGING



The Landmark Inn

A boutique hotel in Marquette, The Landmark Inn, once known as The Northland Hotel, first opened in 1930. Famous guests include Amelia Earhart, Abbott & Costello, and Louis Armstrong. The hotel fell into disrepair in the 1970s and was restored in 1995, regaining its status as the grandest of Marquette's downtown hotels. Photos provided by The Landmark Inn.



Bella Vista Motel

Located on the waterfront of Lake Superior, the lakeshore and cottage accommodations provide a scenic reprieve after a day of exploring the Keweenaw Peninsula. It is walkable to the small but delightful town of Copper Harbor and its eateries, gift shops, and trails. Photo provided by Bella Vista Motel

ITINERARY, CONT.

After freshening up, you'll have an opportunity to visit with National Park Service staff to learn more about the history of the Keweenaw Peninsula. In the evening, we will enjoy a delicious seafood dinner at Harbor Haus Restaurant, a local favorite.

OVERNIGHT AT BELLA VISTA MOTEL OR SIMILAR

DAY 4 — Wednesday, August 7th | Today is an early morning in preparation for a full day's adventure. After breakfast, we'll drive about an hour south to Houghton where we will board a seaplane to Isle Royale National Park. A remote island at the edge of Lake Superior, it is a car-free wilderness of forests, lakes, and waterways. On this 35-minute flight, take in the exceptional views from above. It is here that the true scale of Lake Superior comes into focus.

Upon arrival on Isle Royale, there will be a brief overview of the park before setting off to explore.

We will return via seaplane in the late afternoon and have dinner in Houghton before returning to Copper Harbor.

*Please note that today's activity is weather dependent.

OVERNIGHT AT BELLA VISTA MOTEL OR SIMILAR

DAY 5 — Thursday, August 8th | Today is your final day to explore the Keweenaw Peninsula. We will start our day with a visit to TNC's stunning Bete Grise Wetlands Preserve. On arrival, board kayaks as we make our way out on the water to explore the quality sand beach and wetlands along Lake Superior. We will be joined by local TNC staff to learn more about this area.

After a final picnic lunch in the Keweenaw, we'll head towards Marquette. Check into the hotel before our final group dinner at Elizabeth's Chophouse.

*Please note that today's activity is weather dependent.

OVERNIGHT AT LANDMARK INN

DAY 6 — Friday, August 9th | After breakfast, depart for home. Shuttles will be arranged based on flight times.



© Devin Leonarduzzi/Quincy Aerial, LLC

Keweenaw Peninsula

Rugged beauty and breathtaking vistas characterize the pristine shorelines of the Keweenaw Peninsula. A popular summer destination in the Upper Peninsula, the area boasts ample opportunities to hike, fish, mountain bike, and go birding. In the winter, visitors can try their hand at cross country skiing, snowmobiling, and more!



© Johnathan Irish

Isle Royale National Park

This remote National Park is made up of one large island and over 450 smaller islands. While on shore, explore some of the 166 miles of trails.

PRICE DETAIL

Double Occupancy \$5,885
Single Occupancy: \$6,645

Price is based on a minimum of 13. Trip size not to exceed 14 travelers.

Price **includes** all lodging, transportation, activities, tips, meals, TNC expert staff and local guides. Price does **not include** your roundtrip flight to Marquette, Michigan.

PLEASE NOTE: This itinerary is representative of your trip, and like all natural history excursions, activities are subject to modification based on weather and unforeseen events. We will do our best to keep you informed on any necessary changes.